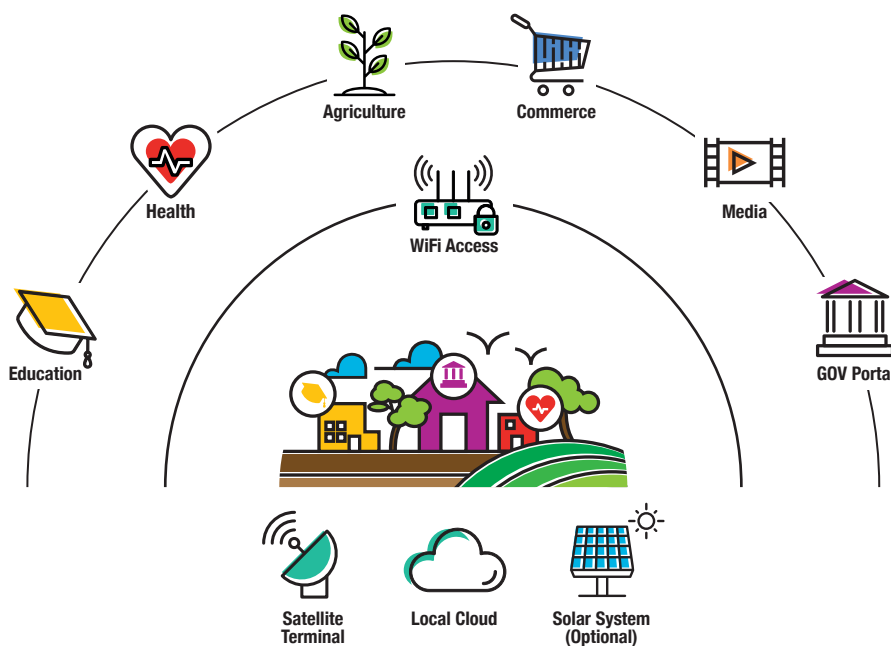


# DIGITAL COMMUNITY PLATFORM

LEADING THE WAY TO  
A CONNECTED FUTURE



## Digital Transformation & Sustainability for a Better Tomorrow



Digital equality is not only a necessity for modern living, but a right. It is precisely the populations, who need it the most, that live without the tremendous benefits enabled by the information revolution, and the gaps between main cities and remote, unconnected communities continues to grow. Spacecom is determined to make a change and create a new reality which provides digital equality and stimulates socio-economic activity. Our goal is to empower remote communities, with scalable digital solutions that will improve the quality of the lives of millions and allow governments and NGOs to increase the accessibility, security and effectiveness of public services.

## Goals & Vision



### e-HEALTH

Linking remote clinics to global sources



### EDUCATION

Opening a world of e-Learning possibilities



### AGRICULTURE

Bringing technology & efficiency to the field



### GOVERNMENT

Connecting rural communities to urban services



### HOME-USE

- TV broadcasting & internet access
- Home schooling

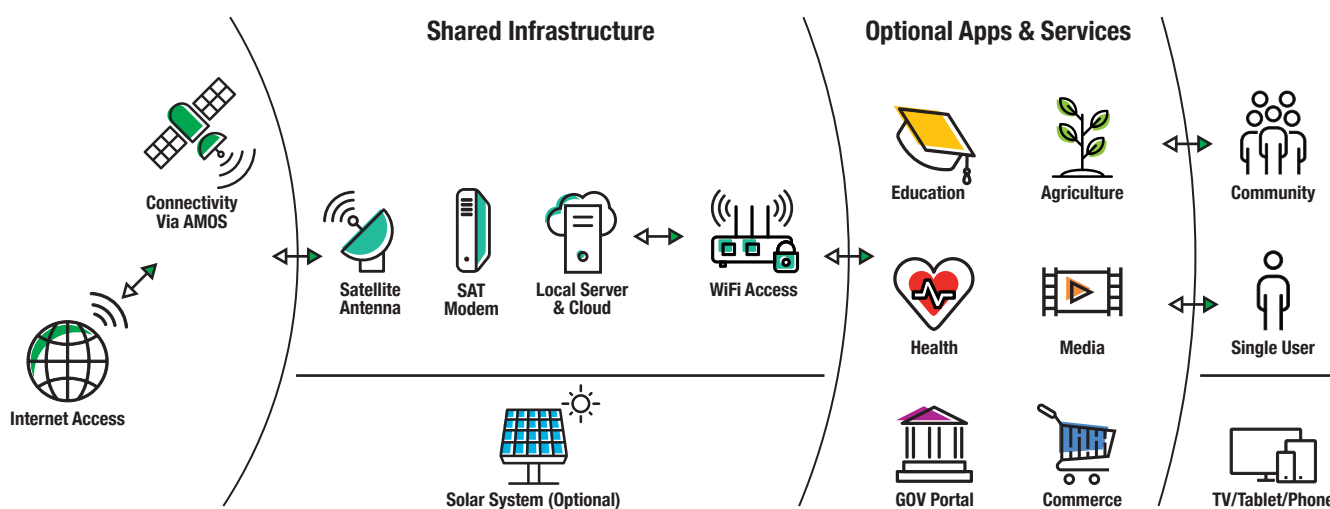
The spread of the COVID-19 pandemic has created a ripple effect on the economy, businesses, civil services and on citizens' overall well-being. Education and health services are amongst the services most affected, having a near and long-term impact on the future of today's young and adult population. The new reality has also demonstrated the importance of digital networks and services needed to support economic resilience, the continuity of essential public services and overall socio-economic wealth.

We at Spacecom, believe that the response to these challenges should be effective and sustainable well through post pandemic life. By combining efforts with selected partners, we were able to design new ways to deliver access to crucial services to remote communities. Our holistic approach enables us to serve as an enabler of equitable, qualitative, and efficient delivery of SDG-related services, utilizing modern digital technologies to support citizens and organizations alike.

## Digital Community Platform – The Solution

The solution comprises of communication through Spacecom's advanced satellite connectivity, local ICT infrastructure (cloud, storage, WiFi access) and a sustainable off-grid solar power solution.

As cloud services rely on broadband internet access and stable electricity, "always-on connectivity" is at the core of the **Spacecom Digital Community Platform (DCP)**, utilizing AMOS satellites, with additional ICT building blocks and physical elements. All elements are integrated and reusable, allowing sustainable, scalable and cost-effective deployment of multi-sector solutions.



## Efficient Management of Crucial Data

A **cloud-based management system**, serves as a platform that manages a variety of applications, through secure, remote access, enabling service owners to safely access and manage their respective applications.

Our **content management systems** manage the distribution of digital content, tools and applications between the cloud-based repository and the communities. This provides quick syncing of crucial information, such as medical records or student progress reports, while maintaining appropriate data privacy and security.

## Minimizing Operational Costs

To ensure effective use of local and remote resources and minimize operational costs, typically associated with satellite capacity, Spacecom has significantly reduced the satellite capacity OPEX while preserving high-quality communication by making use of satellite multicast efficiencies.

## Diverse Solutions for a Range of Applications

Solution	Users	Usage	CAPEX	OPEX
TV – Direct to Home	Youth and adults	Using home screens	Very Low	Low
Live and stored video streaming – OTT	Home / public locations	Hand held devices over WiFi		
Home schooling (satellite - one way)	Students	Learning offline via (local) distributed content or live webcast, mass scale		
Home schooling (satellite + 2G/3G return)	Students and teachers	Tracking student progress, basic interaction		
Community Center WiFi Hotspot	For the entire population, free or via prepaid vouchers	Satellite connectivity kit, media server with local cloud, NB Wi-Fi	Low	Low
Media content distribution for local usage and playback	For the entire population	For education, health, agriculture, commerce, news, GOV services	Low	Low
Digital skills education in the community	For the entire population	Improving digital literacy using live and off-line courses	Low	Medium
e-Education at community/school	Youth and Students	With local content or live webcast	Low	Low
e-Education at school/college	Professionals / Experts Youth and Students	Interactive live webcast	Medium	Medium
Professional training in the community	Adults	Live and off-line courses for each profession (Health, Agriculture, Finance etc.)	Low	Medium
Community Telemedicine	Health Professionals / Experts	Preliminary assessment, guidance	Low	Low
Remote clinics e-Health services with local diagnosis via a digital lab and cloud connectivity	Paramedics (locations where doctors are unavailable)	Health services for remote locations	Medium	Medium
Online expert consultation for Remote clinics	Health Professionals / Experts / Doctors	Access to patient information, diagnosis and lab results, live consultation via video.	Medium	High
Solar power remote clinics with multiple sensing, diagnosis and imaging devices	Health Professionals / Experts / Doctors	Designed-for-solar, all included clinic for off-grid communities. Solar power system included	High	Medium
Agriculture	Farmers / Agriculture Experts	Weather alerts, best market to sell goods, right time to fertilize or harvest, pest management	Medium	Medium
Commerce	Retailers, Travel, Producers of goods and products, Residents, Transportation	Goods ordering, Markets information, Online trading, Reservations, Marketing	Medium	Medium
e-GOV	Government officials / Residents	Access to Governmental services, payments, information, online forms	Medium	Medium

## About Spacecom

Spacecom (TASE: SCC) is a satellite communications provider, and proprietary owner of the AMOS satellite fleet. It's recent addition, AMOS-17 is a fully digital and advanced High Throughput Satellite (HTS) which further expands Spacecom's reach over Africa and Asia.

Since its establishment, the company has built a strong standing as an innovator in its field, and serves as a partner

to its customers, providing network optimization techniques, on-site consultation and tailored solutions to suit their specific needs and drive business growth.

Spacecom's solutions include end-to-end managed services, professional services, turn-key solutions, Cellular Backhaul, trunking solutions, and broadcast, data and broadband satellite services.